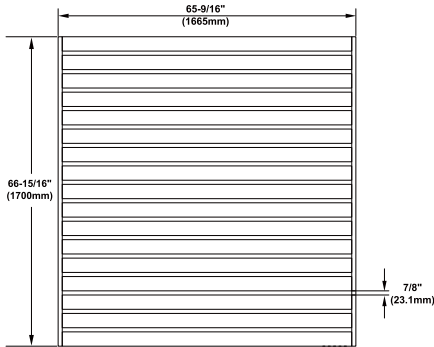


\*Not shown to scale.

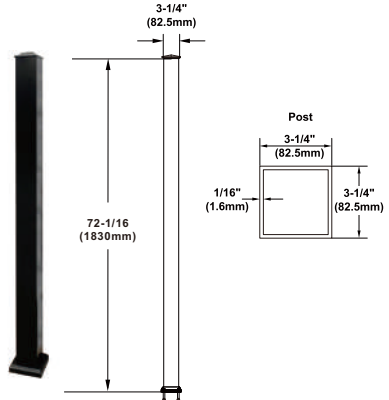
## AASF7272

### Aluminum Slat Fence Panel 72"x72"



## FP72-01

### Fence Post 3-1/4"x72"



\* Accessories Info: 6 pcs Self-drilling screw, 4 pcs pull screw \*

\* Components sold separately\*

#### Specifications:

**Height:** 72-1/16"(1830mm)

**Pack Quantity:** 1 Panel per pack

**Include:** 6 Screws (M6\*60mm)

**Width:** 72-1/16"(1830mm)

**Material:** Aluminum alloy

**Thickness:** 3-1/4"(82.5mm)

**Finish:** Matte Black

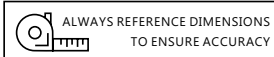
#### Product Overview:

- Aluminum Slat Fence Panel is a DIY-friendly solution with a modern design.
- The product is suitable for all kinds of extreme weather, can withstand high winds and is not easily blown over.
- The product offers the perfect combination of privacy and security while still allowing airflow.
- The product should be mounted on concrete ground.

#### UNIKOO LIMITED WARRANTY:

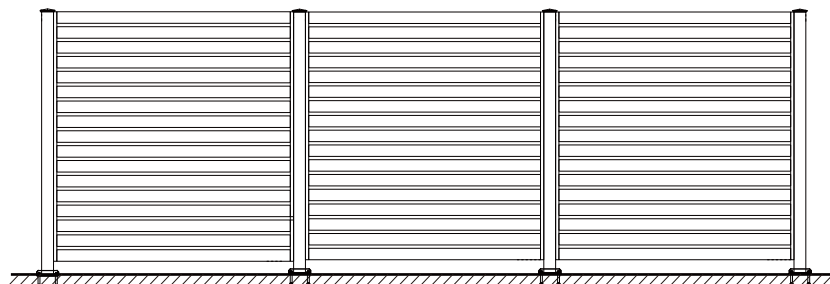
- UNIKOO warrants its commercial hardware for a period of 3 year from the date of purchase. UNIKOO commercial hardware is warranted against material and workmanship defects.
- All warranty claims are subject to inspection by UNIKOO before providing a resolution against the warranty claim.
- This warranty is void if it is determined after UNIKOO inspection that the Hardware has been improperly installed and/or maintained in a manner not conforming to UNIKOO guidelines and instructions provided at time of purchase.
- UNIKOO's responsibility to provide a resolution under said warranty will be limited to a refund of purchased price or provide a replacement for the hardware.
- The refund or replacement will constitute UNIKOO's limited liability and obligation for any and all defective material/workmanship for said warranty claim.
- THIS WARRANTY IS EXCLUSIVE AND UNIKOO MAKES NO OTHER WARRANTY, EXPRESSED OR IMPLIED.

# FENCE INSTALLATION



\*Not shown to scale.

## Aluminum Slat Fence Panel 72"x72"



Note \* Fence panel, post, gate panel are all sold separately\*

\* Above image for illustration purposes only\*

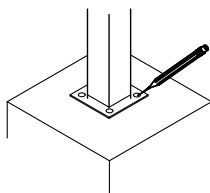
### 1 Attach the fence panel to the post with screws



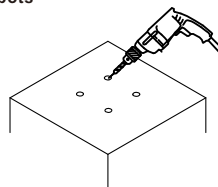
### 2 Put the cover on



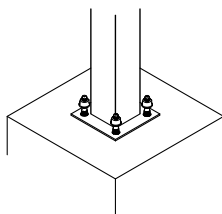
### 3 Align the position and mark it with a pen



### 4 Drill the holes using a 1/2" drill bit on the marked spots



### 5 Tighten the screws



### 6 Close the cover, apply caulk along the edges of the cover with glazing sealant

