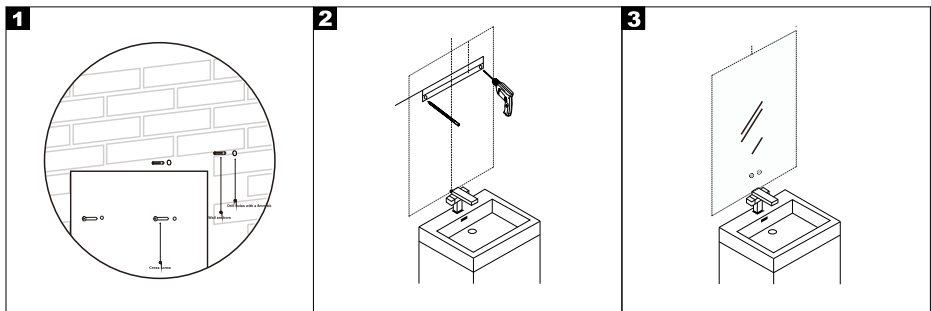




# PRODUCT MANUAL

Thanks for buying our product in order to ensure that you can fully understand the functions of the products you purchase, please be sure to read the instructions and keep them properly for future reference.

## Installation instructions

1. Place the mirror cabinet in the proper position on the wall and drill the holes according to the holes on the back of the cabinet. Insert the wall anchors into the holes.
2. Tighten the screws into the wall anchors to secure the cabinet.
3. Turn off the power before installation. Installation and maintenance should only be performed by a professional electrician.



Button icon		Funtions
	Light	Short press to turn on/off LED light ; Long press to adjust brightness.
	Anti-fog	Short press to turn on/off anti-fog function.