

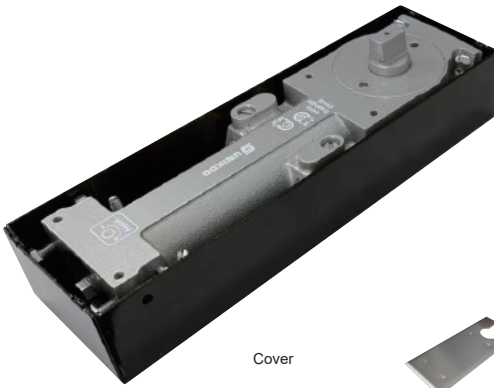
CFDC150-ADJ

Adjustable Spring Power 90 Degree Hold Open Floor Mounted Closer



ALWAYS REFERENCE DIMENSIONS
TO ENSURE ACCURACY

*Not shown to scale.



Cover



X1

Dust proof cover



X1

Screws

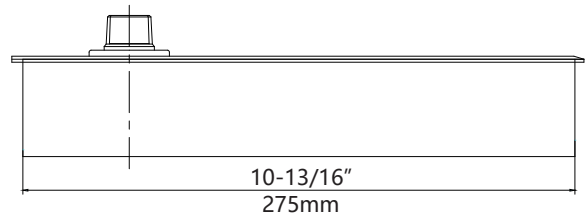
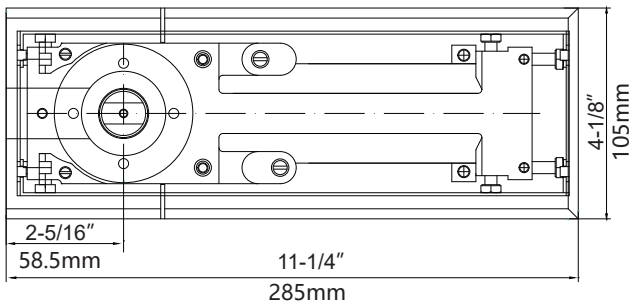
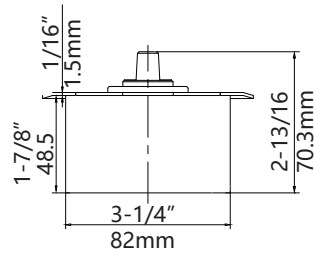


X4

wrench



X1



Specifications

Material: Steel & Stainless steel
Body Height : 1-7/8" (48.5)

Door width: 23-5/8"-43-5/16" (600-1100mm)
Body Length: 10-13/16" (275mm)

MAX. Door Weight: 330.7lbs(150kg)
Body Width: 3-1/4" (82mm)

Product Overview:

- Suitable for Doors from 23-5/8"-43-5/16" (600-1100mm) Wide
- UL Listed
- ANSI Grade 1 Listed
- Spring Power Adjustable
- 5 years limited warranty

Recommendations:

To ensure public safety, we strongly advise using only tempered safety glass.

UNIKOO LIMITED WARRANTY:

- UNIKOO warrants its commercial hardware for a period of 5 years from the date of purchase. UNIKOO commercial hardware is warranted against material and workmanship defects.
- All warranty claims are subject to inspection by UNIKOO before providing a resolution against the warranty claim.
- This warranty is void if it is determined after UNIKOO inspection that the Hardware has been improperly installed and/or maintained in a manner not conforming to UNIKOO guidelines and instructions provided at time of purchase.
- UNIKOO's responsibility to provide a resolution under said warranty will be limited to a refund of purchased price or provide a replacement for the hardware.
- The refund or replacement will constitute UNIKOO's limited liability and obligation for any and all defective material/workmanship for said warranty claim.
- THIS WARRANTY IS EXCLUSIVE AND UNIKOO MAKES NO OTHER WARRANTY, EXPRESSED OR IMPLIED.

INSTALLATION INSTRUCTION

CFDC150-ADJ

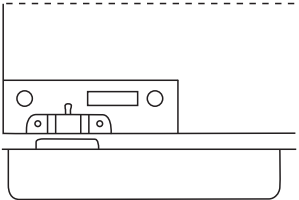
**Adjustable Spring Power 90 Degree
Hold Open Floor Mounted Closer**



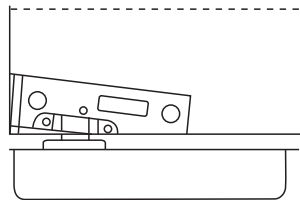
ALWAYS REFERENCE DIMENSIONS
TO ENSURE ACCURACY

*Not shown to scale.

Glass door



1.Right



2.Wrong

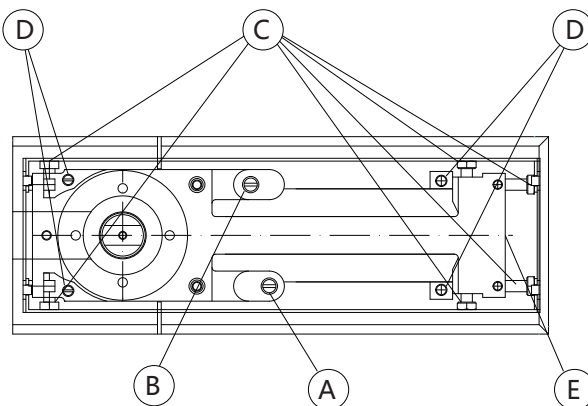
Notes:

If Installing like Number 1, it will be stable, flexible and free of noise during application.

If Installing like Number 2, there will be noise when opening and closing the door during application.

If screw is not tightened, the door will sway during application.

Installation & Adjustment



(1) Prepare glass door with door clamps.

(2) Cut out recess in floor large enough for cement case and fit floorspring in position.

Ensure spindle aligns with pivot pin in frame. take dust plate from coverplate pack and place over spindle before hanging door.

(3) Lift door onto floor spring and open door enough to reveal pivot pin retracting screw.

(4) Adjust screw C to position the floor spring to the right place.

(5) To adjust door height, adjust screws D.

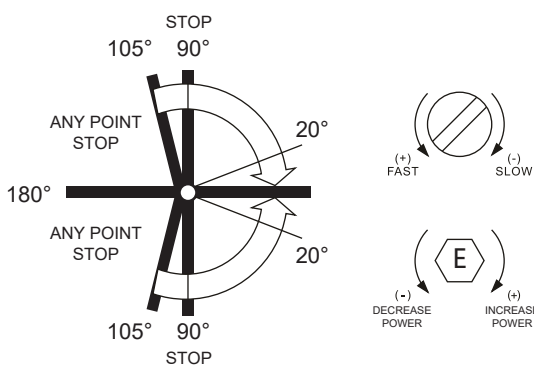
(6) Adjust screw E to adjust spring power. Clockwise to increase spring power, counterclockwise to decrease spring power.

(7) To adjust the speed from 105°~20° turn valve screw A, counter clockwise for faster and clockwise for slower.

(8) For the last 20° of latching turn valve screw B, counter-clockwise for faster and clockwise for slower.

(9) Fit coverplate with 4 screws.

(10) The door's range of motion is from -180° to 180°, with stops at 90° and any point between 105° to 180°.



Notes:

1. The under adjusting screw must prop the doorside to fix the door.

2. Install dust proof cover on the centre of the pivot or oil leakage and other adverse results will be caused. The company shall not be liable for the above results.

3. Installation finished, the closing speed is regulated by speed control hole (needle), left for quick and right for slow. Speed regulation unfinished, it is forbidden to push or pull the door to prevent door and floor spring damage.

4. After regulating the sites of floor springs, tighten the screw nuts to fix the floor springs, or it will sway during application.