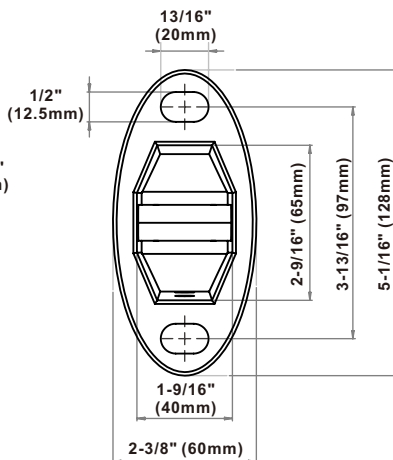
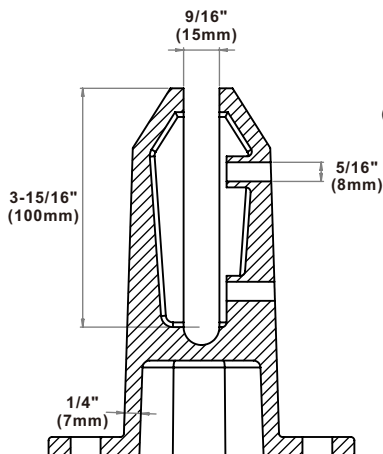
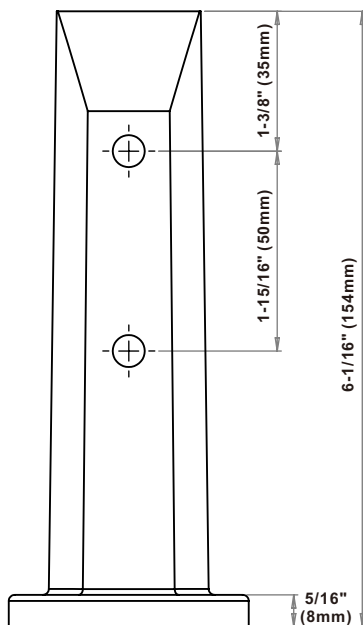
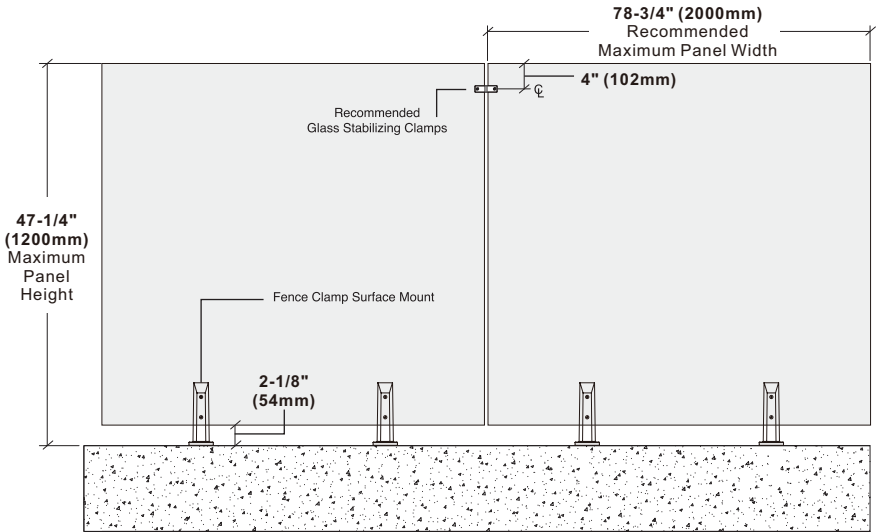




ALWAYS REFERENCE DIMENSIONS  
TO ENSURE ACCURACY

\*Not shown to scale.





**\*IMPORTANT:** Measure project dimensions starting from the glass edge.

**\*Not shown to scale.**

## Specifications:

**Glass Sizes:** 3/8" (10mm) to 1/2" (12mm) thick tempered safety glass  
**Includes:** Gaskets, screws, and template

**Construction:** 2205 Stainless Steel

## Maximum Glass Capacities for Two Post Clamp

**Maximum panel height:** 47-1/4"(1200mm)  
**Maximum weight per 2 posts:** 159 lbs. (72kg)

**Maximum panel width:** 78-3/4"(2000mm)

## Recommendations:

To ensure public safety, we strongly advise using only tempered safety glass.

## UNIKOO LIMITED WARRANTY:

- UNIKOO warrants its commercial hardware for a period of 1 year from the date of purchase. UNIKOO commercial hardware is warranted against material and workmanship defects.
- All warranty claims are subject to inspection by UNIKOO before providing a resolution against the warranty claim.
- This warranty is void if it is determined after UNIKOO inspection that the Hardware has been improperly installed and/or maintained in a manner not conforming to UNIKOO guidelines and instructions provided at time of purchase.
- UNIKOO's responsibility to provide a resolution under said warranty will be limited to a refund of purchased price or provide a replacement for the hardware.
- The refund or replacement will constitute UNIKOO's limited liability and obligation for any and all defective material/workmanship for said warranty claim.
- THIS WARRANTY IS EXCLUSIVE AND UNIKOO MAKES NO OTHER WARRANTY, EXPRESSED OR IMPLIED.