

# CWS14CP-01

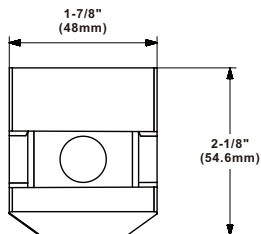
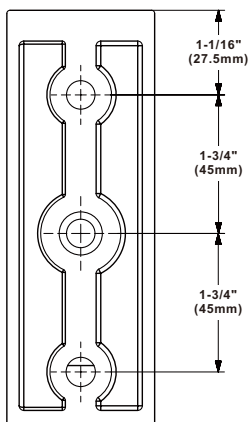
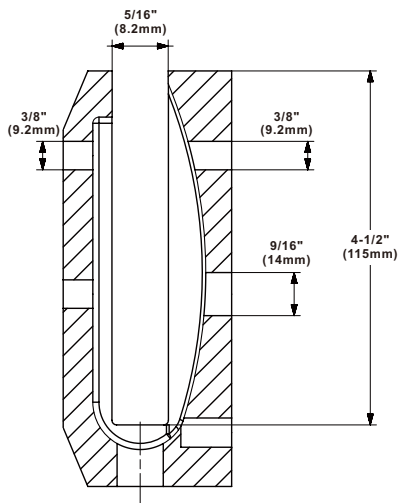
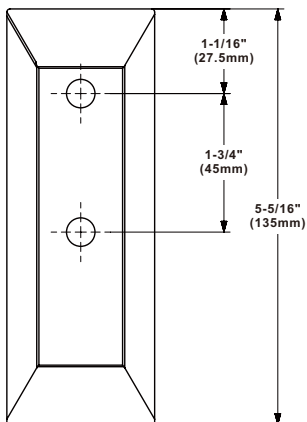
**IMPORTANT:** Measure project dimensions starting from the glass edge.



ALWAYS REFERENCE DIMENSIONS  
TO ENSURE ACCURACY

\*Not shown to scale.

## Commercial- Mini Side Mount Spigot



Item Number	Glass Thickness
CWS14CP-01	1/2" (12mm)

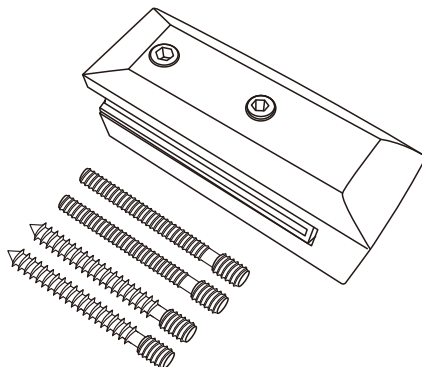
# CWS14CP-01

**IMPORTANT:** Measure project dimensions starting from the glass edge.



\*Not shown to scale.

## Commercial- Mini Side Mount Spigot



**\*IMPORTANT:** Measure project dimensions starting from the glass edge.

**\*Not shown to scale.**

### Specifications:

**Glass Thickness:** 1/2" (12mm) thick tempered safety glass  
**Includes:** Gaskets, screws, and template

**Construction:** 2205 Stainless Steel

### Maximum Glass Capacities for Two Post Clamp

**Weight bearing capacity:** 2205 lbs. (1000kg)

**Recommended Maximum Panel Width:** 78-3/4" (2000mm)

**Maximum Panel Height:** 78-3/4" (2000mm)

### Recommendations:

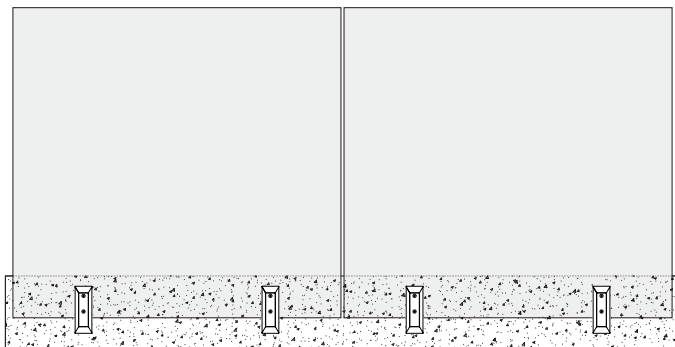
To ensure public safety, we strongly advise using only tempered safety glass.

### UNIKOO LIMITED WARRANTY:

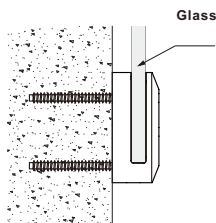
- UNIKOO warrants its commercial hardware for a period of 1 year from the date of purchase. UNIKOO commercial hardware is warranted against material and workmanship defects.
- All warranty claims are subject to inspection by UNIKOO before providing a resolution against the warranty claim.
- This warranty is void if it is determined after UNIKOO inspection that the Hardware has been improperly installed and/or maintained in a manner not conforming to UNIKOO guidelines and instructions provided at time of purchase.
- UNIKOO's responsibility to provide a resolution under said warranty will be limited to a refund of purchased price or provide a replacement for the hardware.
- The refund or replacement will constitute UNIKOO's limited liability and obligation for any and all defective material/workmanship for said warranty claim.
- THIS WARRANTY IS EXCLUSIVE AND UNIKOO MAKES NO OTHER WARRANTY, EXPRESSED OR IMPLIED.



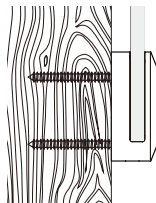
## INSTALLATION INSTRUCTIONS



**1** Flat head bolts are used for concrete surfaces



**2** Use pointed bolts for wooden surfaces



**1** Turn (A) clockwise with a hex wrench, and the glass moves backward.

**2** Turn (B) clockwise with a hex wrench, and the glass moves forward.

**3** The adjustable angle for each direction is 2-3 degrees.

