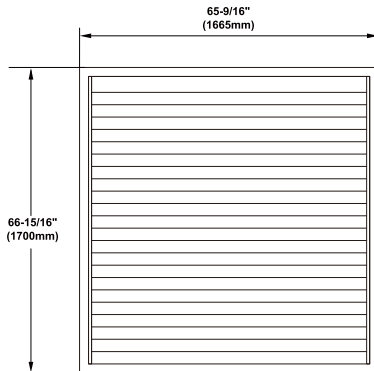


*Not shown to scale.

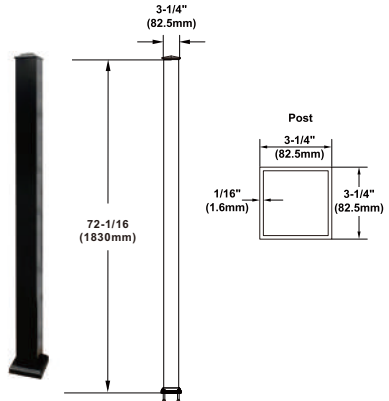
AALF7272

Aluminum Louver Fence Panel 72"x72"



FP72-01

Fence Post 3-1/4"x72"



* Accessories Info: 6 pcs Self-drilling screw, 4 pcs pull screw *

* Components sold separately*

Specifications:

Height: 72-1/16"(1830mm)

Pack Quantity: 1 Panel per pack

Include: 6 Screws (M6*60mm)

Width: 72-1/16"(1830mm)

Material: Aluminum alloy

Thickness: 3-1/4"(82.5mm)

Finish: Matte Black

Product Overview:

- Aluminum Louver Fence Panel is a DIY-friendly solution with a modern design.
- The product is suitable for all kinds of extreme weather, can withstand high winds and is not easily blown over.
- The product offers the perfect combination of privacy and security while still allowing airflow.
- The product should be mounted on concrete ground.

UNIKOO LIMITED WARRANTY:

- UNIKOO warrants its commercial hardware for a period of 3 year from the date of purchase. UNIKOO commercial hardware is warranted against material and workmanship defects.
- All warranty claims are subject to inspection by UNIKOO before providing a resolution against the warranty claim.
- This warranty is void if it is determined after UNIKOO inspection that the Hardware has been improperly installed and/or maintained in a manner not conforming to UNIKOO guidelines and instructions provided at time of purchase.
- UNIKOO's responsibility to provide a resolution under said warranty will be limited to a refund of purchased price or provide a replacement for the hardware.
- The refund or replacement will constitute UNIKOO's limited liability and obligation for any and all defective material/workmanship for said warranty claim.
- THIS WARRANTY IS EXCLUSIVE AND UNIKOO MAKES NO OTHER WARRANTY, EXPRESSED OR IMPLIED.

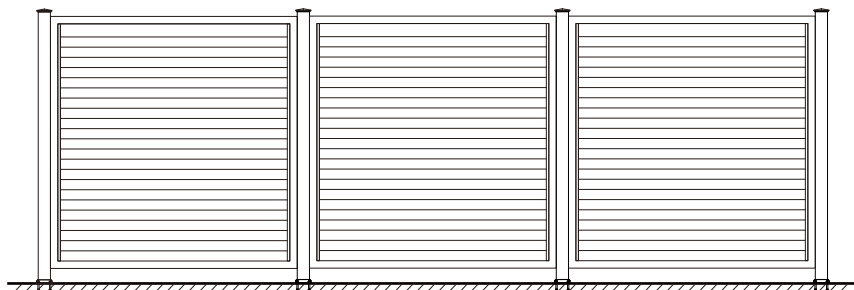
FENCE INSTALLATION



ALWAYS REFERENCE DIMENSIONS
TO ENSURE ACCURACY

*Not shown to scale.

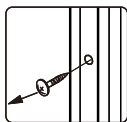
Aluminum Louver Fence Panel 72"x72"



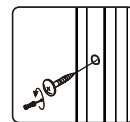
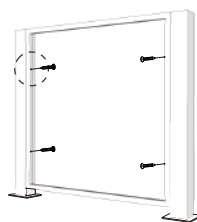
Note * Fence panel , post, gate panel are all sold separately *

* Above image for illustration purposes only *

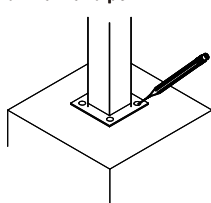
1 Unscrew the louver piece



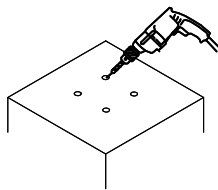
2 Attach the louver frame to the post



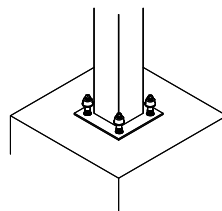
3 Align the position and mark it with a pen



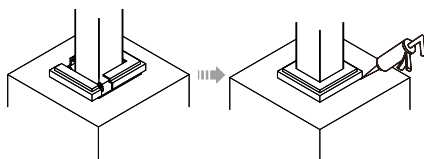
4 Drill the holes using a 1/2" drill bit on the marked spots



5 Tighten the screws



6 Close the cover, apply caulk along the edges of the cover with glazing sealant



7 Install the louver to the frame

