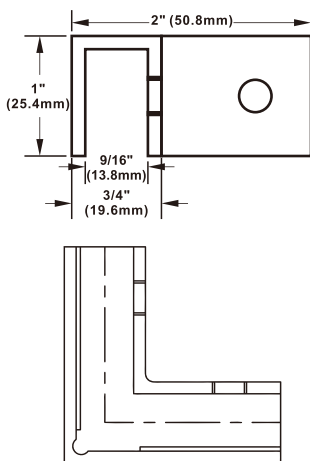


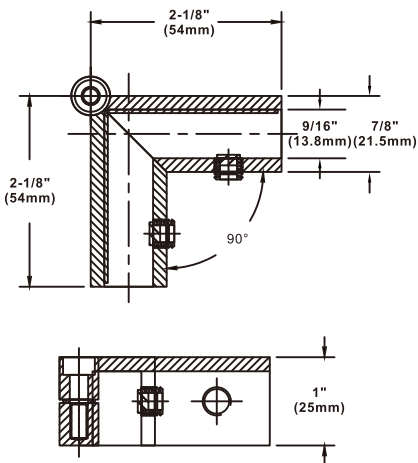
## SOC90

90 Degree "Sleeve Over" Glass Clamp



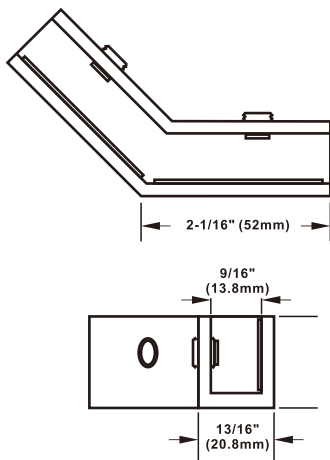
## SOC90ADJ

Adjustable 90 to 180 Degree Glass Shelf Clamp



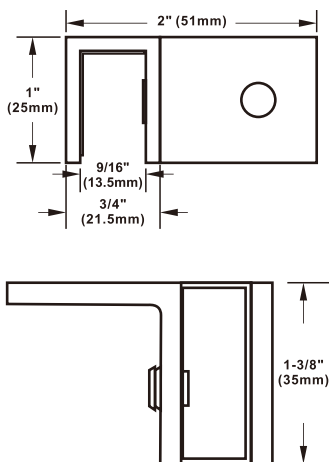
## SOC135

135 Degree Glass Shelf Clamp



## SO37L/37R

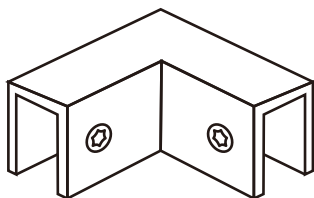
90 Degree "Sleeve Over" Wall Mount Glass Clamp - Left/Right



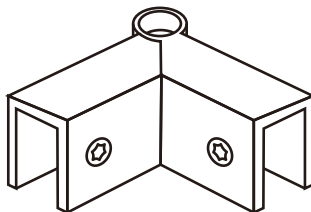
ALWAYS REFERENCE DIMENSIONS  
TO ENSURE ACCURACY

**\*IMPORTANT:** Measure project dimensions starting from the glass edge.  
**\*Not shown to scale.**

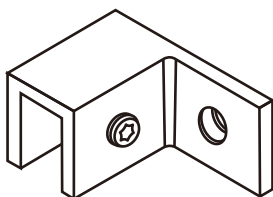
# SOC90 | SOC90ADJ | SOC135 | SOC37L | SOC37R



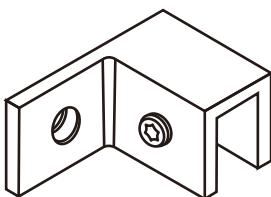
**SOC90**



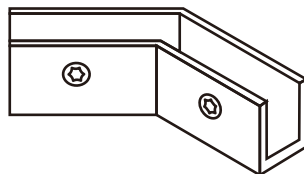
**SOC90ADJ**



**SOC37L**



**SOC37R**



**SOC135**

## Specifications:

**Glass Sizes:** 5/16" (8mm) to 1/2" (12mm) thick tempered safety glass  
**Includes:** Gaskets and template

**Construction:** Solid brass

## Description:

Sleeve Over Glass Clamps are designed to provide a mechanical fastener to cover the shear forces placed on the glass panels. No special fabrication of the glass is required. Can also be used to secure the glass panels in position while the applied silicone sealant in the joint cures (the silicone sealant glues the glass panels together, prevents water leakage, and provides the pull strength to keep the panels from separating). Clamps are secured in place by nylon tipped Allen set screws.

## Recommendations:

To ensure public safety, we strongly advise using only tempered safety glass.

## Maintenance:

- Avoid the use of abrasive cleaners on the hardware. Some components feature a delicate clear lacquer coating that could suffer irreparable harm from harsh chemicals. It's recommended to inform your customers that daily maintenance involving drying the hardware with a clean, soft towel. In cases where mineral deposits accumulate, create a solution by adding a few drops of mild liquid soap (such as Ivory or a comparable product) to a cup of warm water. Employ a soft, non-abrasive cloth to clean the hardware, then ensure a thorough rinse with clean, warm water, followed by proper drying.

## UNIKOO LIMITED WARRANTY:

- UNIKOO warrants it's Shower Door Hardware for a period of 3 years from the date of purchase. UNIKOO Shower Door Hardware is warranted against material and workmanship defects.
- All warranty claims are subject to inspection by UNIKOO before providing a resolution against the warranty claim.
- This warranty is void if it is determined after UNIKOO inspection that the Hardware has been improperly installed and/or maintained in a manner not conforming to UNIKOO guidelines and instructions provided at time of purchase.
- UNIKOO's responsibility to provide a resolution under said warranty will be limited to a refund of purchased price or provide a replacement for the hardware.
- The refund or replacement will constitute UNIKOO's limited liability and obligation for any and all defective material/workmanship for said warranty claim.
- THIS WARRANTY IS EXCLUSIVE AND UNIKOO MAKES NO OTHER WARRANTY, EXPRESSED OR IMPLIED.