

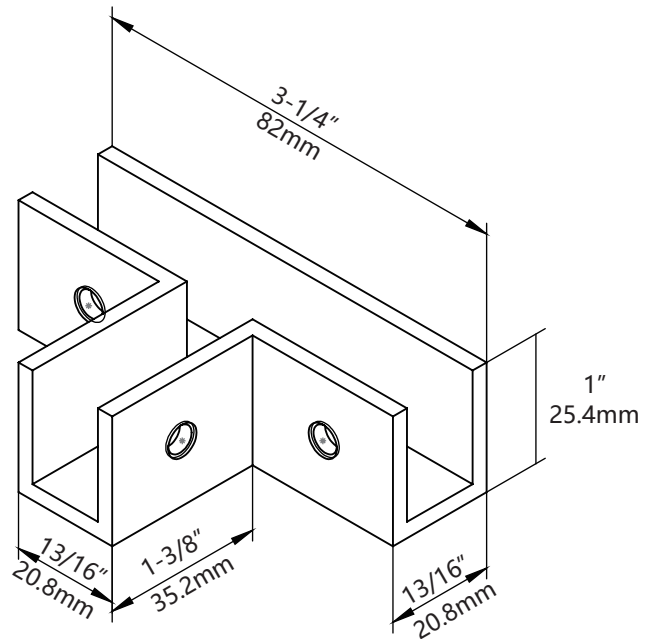
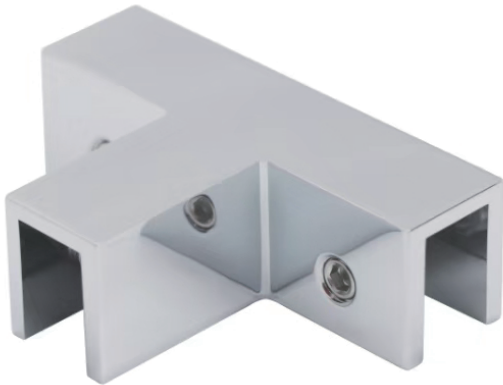
# SOC90T

## Sleeve Over Clamp - 90° T Glass Clamp for 5/16" to 1/2" Glass



ALWAYS REFERENCE DIMENSIONS  
TO ENSURE ACCURACY

\*Not shown to scale.



### Specifications

**Material:** Brass      **Glazing thickness:** 5/16" to 1/2" (8 to 12 mm)      **Includes :** One 3mm hex key (Allen key) , Gaskets

### Product Overview:

- No glass cut out required
- For 5/16" to 1/2" (8 to 12 mm) thick glass
- Use ,monolithic tempered glass
- Solid brass
- Four Finishes: brushed nickel , chrome, matte black, statin brass

### UNIKOO LIMITED WARRANTY:

- UNIKOO warrants it's commercial hardware for a period of 1 year from the date of purchase. UNIKOO commercial hardware is warranted against material and workmanship defects.
- All warranty claims are subject to inspection by UNIKOO before providing a resolution against the warranty claim.
- This warranty is void if it is determined after UNIKOO inspection that the Hardware has been improperly installed and/or maintained in a manner not conforming to UNIKOO guidelines and instructions provided at time of purchase.
- UNIKOO's responsibility to provide a resolution under said warranty will be limited to a refund of purchased price or provide a replacement for the hardware.
- The refund or replacement will constitute UNIKOO's limited liability and obligation for any and all defective material/workmanship for said warranty claim.
- THIS WARRANTY IS EXCLUSIVE AND UNIKOO MAKES NO OTHER WARRANTY, EXPRESSED OR IMPLIED.